

November 27, 2017 9:04 AM
* in pen
* blue or black.

7-4
Lab #

Title of Lab

Your Name
Partner's Name

Purpose: 1 or 2 sentences about what you hope to uncover in the lab.

Hypothesis: only do if you are asked

- a) answer Q. } full sentences.
b) answer Q. }

Materials: copy bullet points/list from lab

Procedure: "See textbook p. _____"

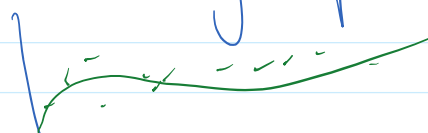
Data and Observations:

- 1) Data table (numerical info).

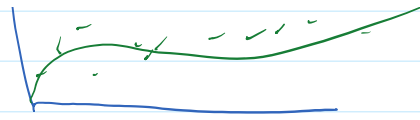
Time (min)	Temperature (°C)
0	
1	
2	
3 ...	
30	

- 2) Qualitative observations
- time/temp that cool things happen.

- 3) Graphs. - see attached graph.
- line graph



- line graph



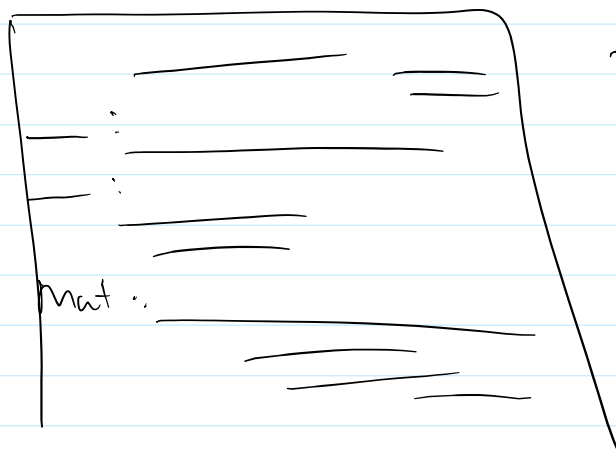
- * on graph paper
- * axis in pen
- * data points in pencil
- * best fit line in pen.

Discussion: answer all of the follow up / analysis questions

- full sentences
- use data to back up answers.

Conclusion: 3-4 sentences summarizing your findings.

- relate to your purpose
- relate to your hypothesis
- sources of error.



- p. 256